

## IN-PERSON ATTENDANCE INFORMATION FOR FAMILIES

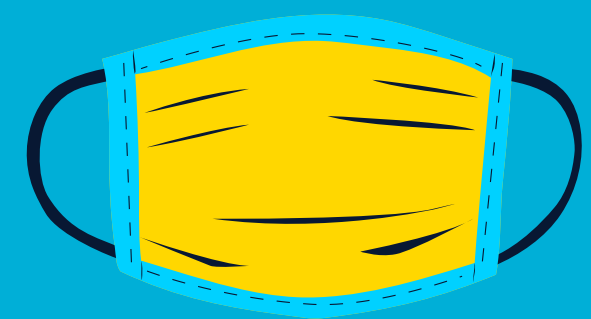
# IN-PERSON LEARNING

On days when a student is scheduled to receive In-Person Learning, the student must attend school for at least half of the day to be marked "Present On-Site."

If the student does not attend school on scheduled In-Person Learning days, the appropriate absent code will be used.

### Elementary School

Attendance in elementary grades is based on daily attendance.



### Middle School

Attendance in middle grades is based on daily attendance. Teachers will continue to record attendance by period to inform the daily attendance code.



### High School

Attendance in high school will be maintained by period.



The Present-Off Site (1R) code can only be used for a student who does not attend on a scheduled In-Person Learning day if the student is at home due to a suspected, positive case of Covid-19, or if the student is required to quarantine due to Covid-19.

Students absent during In-Person Learning days should engage in/complete asynchronous instruction as make-up work.